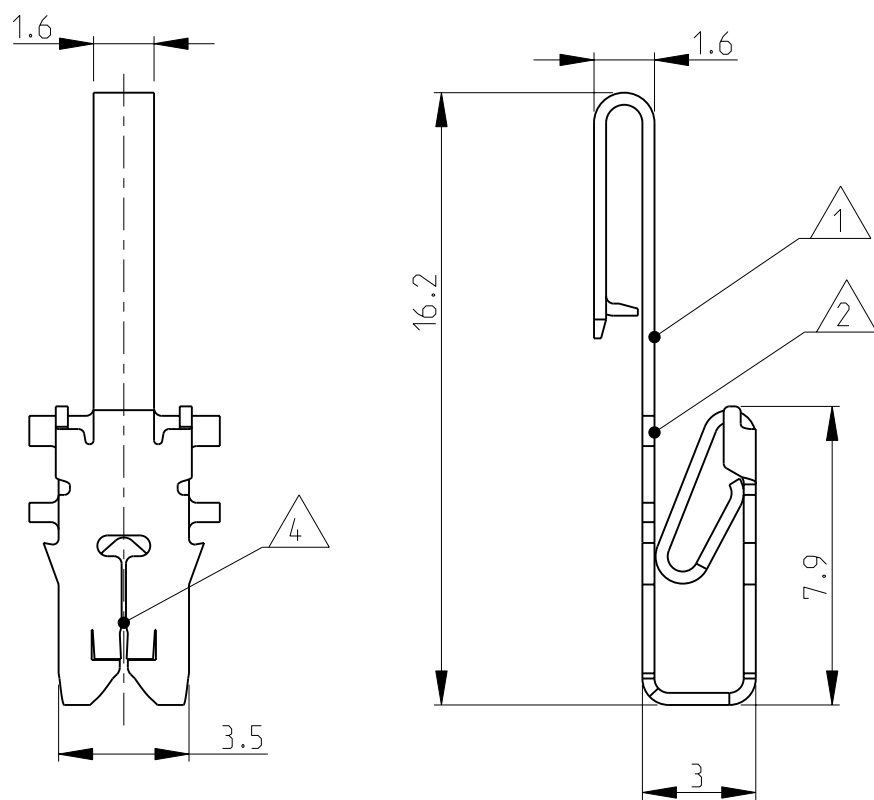
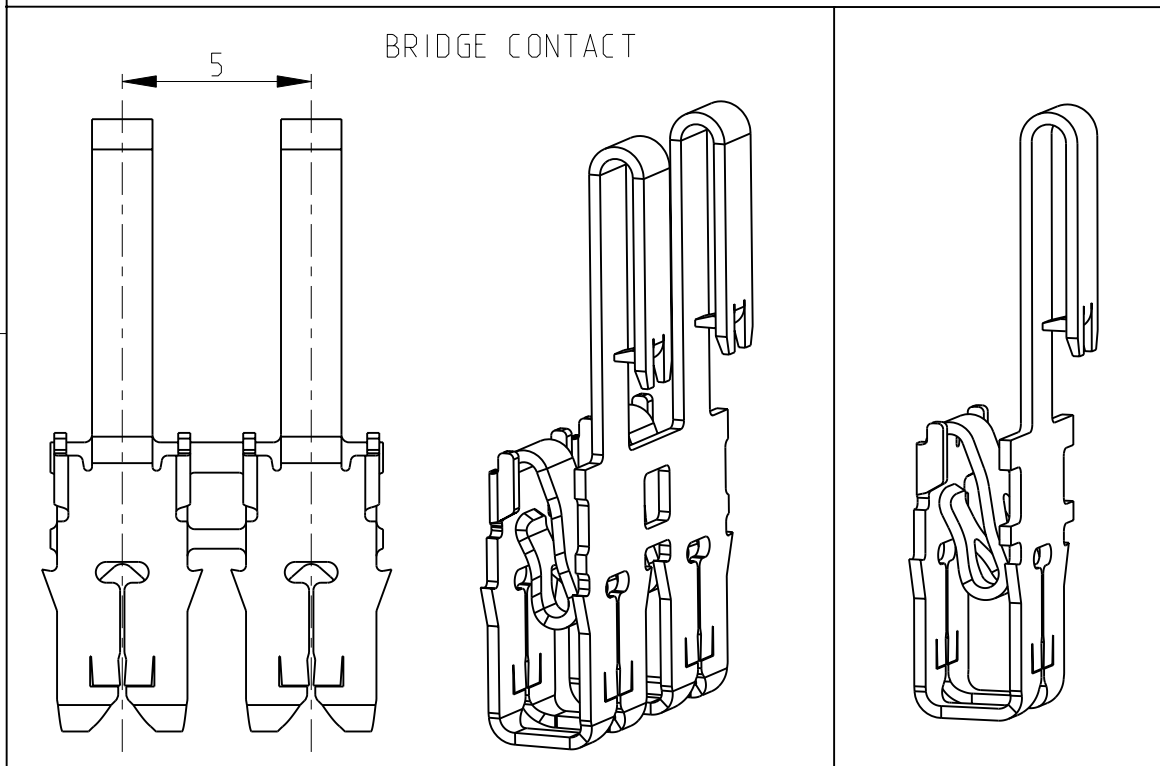
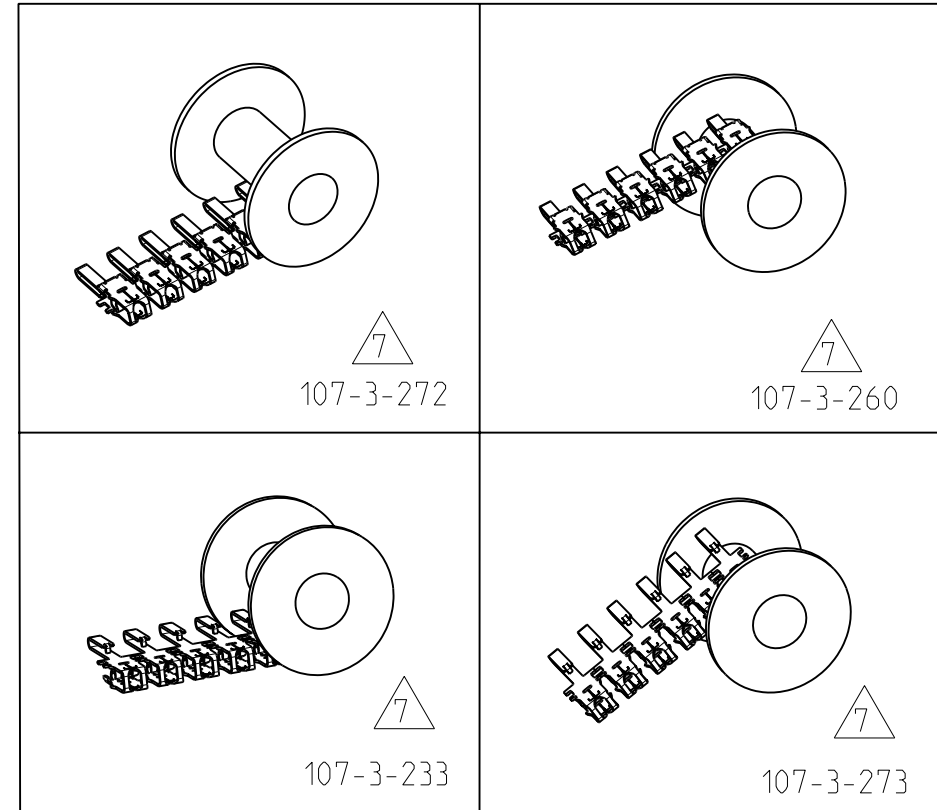


THIS DRAWING IS UNPUBLISHED. RELEASED FOR PUBLICATION  
 © COPYRIGHT 20 ALL RIGHTS RESERVED.

LOC	DIST	REVISIONS					
		P	LTR	DESCRIPTION	DATE	DWN	APVD
A1	-		C2	2-1987143-3 ADDED	30SEP2008	DZ	HB
			D1	TABLE MODIF. AND DRW ADEP. TO PROD.DRW	16DEZ2008	DZ	SZA
			D2	NOTE 3 UPDATED	11SEP2009	PKS	RRP
			D3	ECR-10-026537	08AUG11	KK	HMR



- 8. Zwei Draehete gleichen Durchmessers  
TWO WIRES OF SAME DIAMETER
- 7. Reeling Richtung  
REELING DIRECTION
- 6. Materialdicke 0.32±0.02  
STOCK THICKNESS 0.32±0.02
- 5. Werkzeugvorschub : 5mm  
DIE FEED : 5mm
- 4. Schlitz geeignet fuer Kupferlackdraht  
einfach oder doppelt (gemaeß Tabelle)  
SLOT ACCEPTS: SINGLE OR DOUBLE MAGNET WIRE  
(SEE TABLE FOR SIZE)
- 3. Kontaktkammer nach  
Zeichnung Nr.411-18517  
CONTACT CAVITY ACCORDING  
DRAWING No. 411-18517
- 2. TE Markenzeichen  
TE TRADEMARK
- 1. Kennziffer fuer Lackdrahtbereich  
IDENTIFICATION NO. FOR MAGNET WIRE RANGE



4	0.180 to 0.265	0.180 to 0.265	107-3-233	CuNiSi	Pre-tin	6-1987143-2	D						
					BLANK	6-1987143-1	D						
				7 CuZn	Pre-tin	5-1987143-2	D						
					BLANK	5-1987143-1	D						
					2-1987143-1 posttinned 2-6 µm. Spec.112-16-3	OBSOLETE	<del>2-1987143-3</del>	D					
					107-3-272	CuNiSi	Pre-tin	2-1987143-2	D				
D. MARK	DOUBLE W. WIRE RANGE	SINGLE W. WIRE RANGE	REELING	MATERIAL	PRODUCED FROM	FINISH	PART NO	Par. Rev.					
									7 CuZn	Pre-tin	OBSOLETE	<del>4-1987143-2</del>	D
										BLANK	1-1987143-1	D	

THIS DRAWING IS A CONTROLLED DOCUMENT.

DWN Praveen K 16-May-07  
 CHK M. Boeffert 10-July-07  
 APVD T. Gerlach 10-July-07

**STE** TE Connectivity

NAME: MAG-MATE EDGE-LEAF CONTACT

PRODUCT SPEC: -  
 APPLICATION SPEC: -  
 WEIGHT: -

DIMENSIONS: mm  
 TOLERANCES UNLESS OTHERWISE SPECIFIED:  
 0 PLC ±-  
 1 PLC ±-  
 2 PLC ±- } ±0.2  
 3 PLC ±-  
 4 PLC ±-  
 ANGLES ±-  
 MATERIAL: SEE TABLE  
 FINISH: SEE TABLE

SIZE: A3 CAGE CODE: 00779 DRAWING NO: 1987143 RESTRICTED TO: -  
 SCALE: 1:1 SHEET: 1 OF 1 REV: D3

CUSTOMER DRAWING